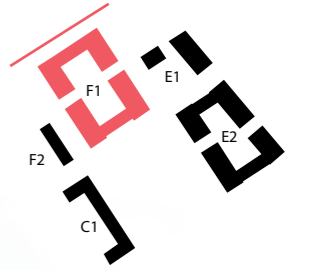


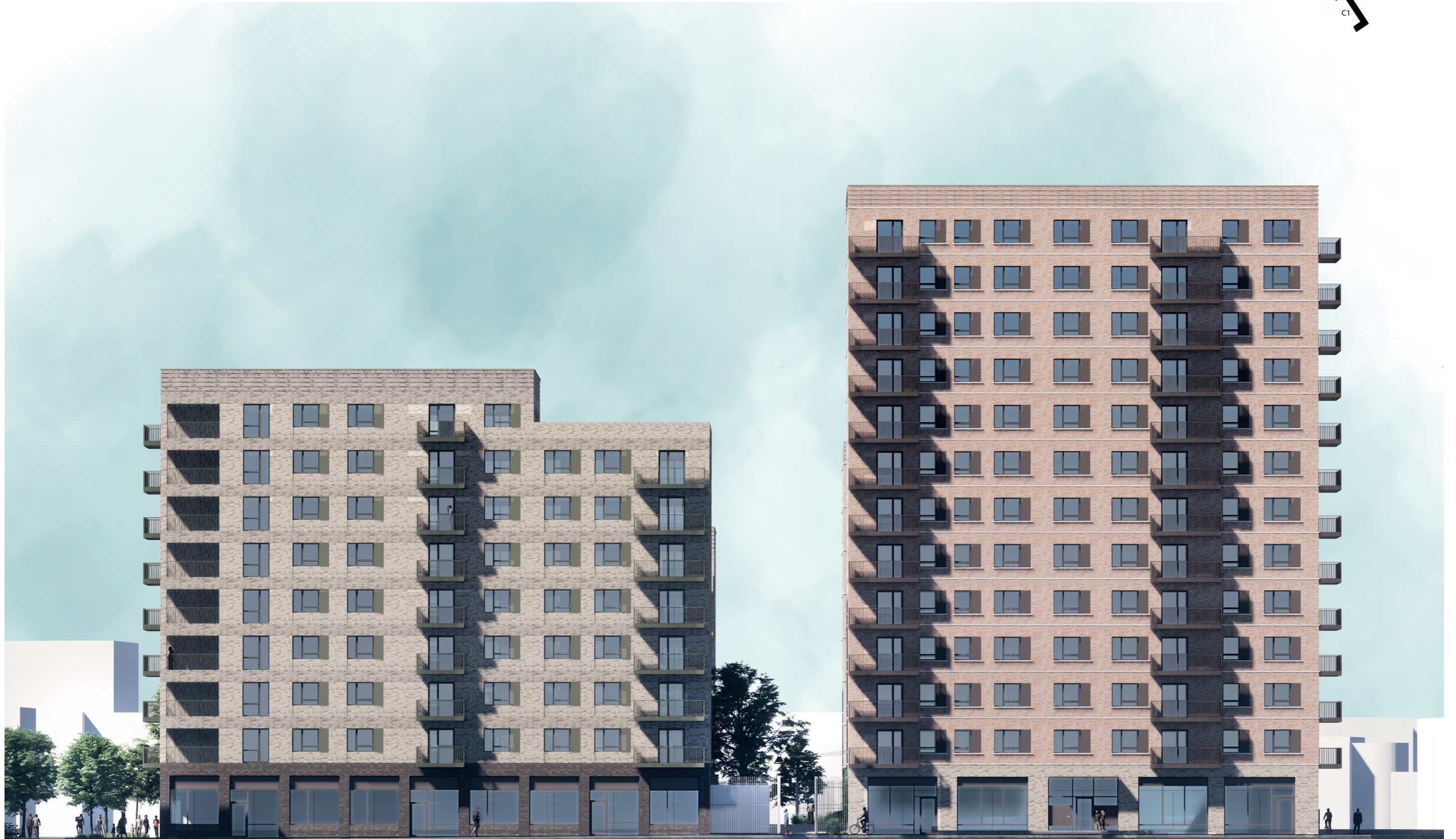
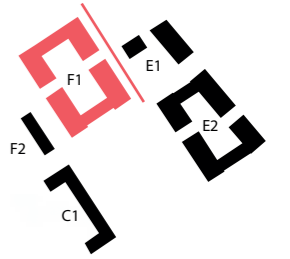
7.3 BLOCK F1

7.3.10 ELEVATION - NORTH



7.3 BLOCK F1

7.3.11 ELEVATION - EAST

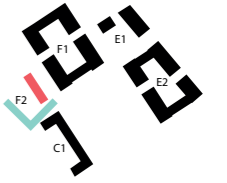
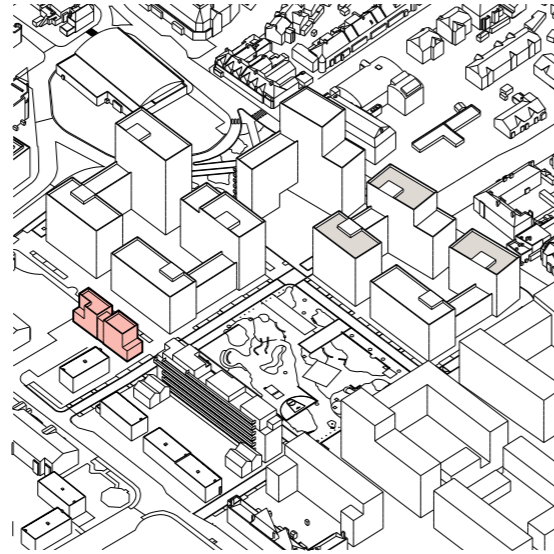


7.4 BLOCK F2

7.4.1 INTRODUCTION

Positioned adjacent to Block F1 and the pedestrian priority street leading from Gascoigne Park to St Paul's Road, Block F2 is a completely residential building. The building is only 4 storeys tall, creating a more varied streetscape and strengthening the relationship between Block F1 and the existing buildings to the west of Block F2.

The building consists of four large duplex units accessed from street level with two storeys of single-level units above, accessed via a central core.

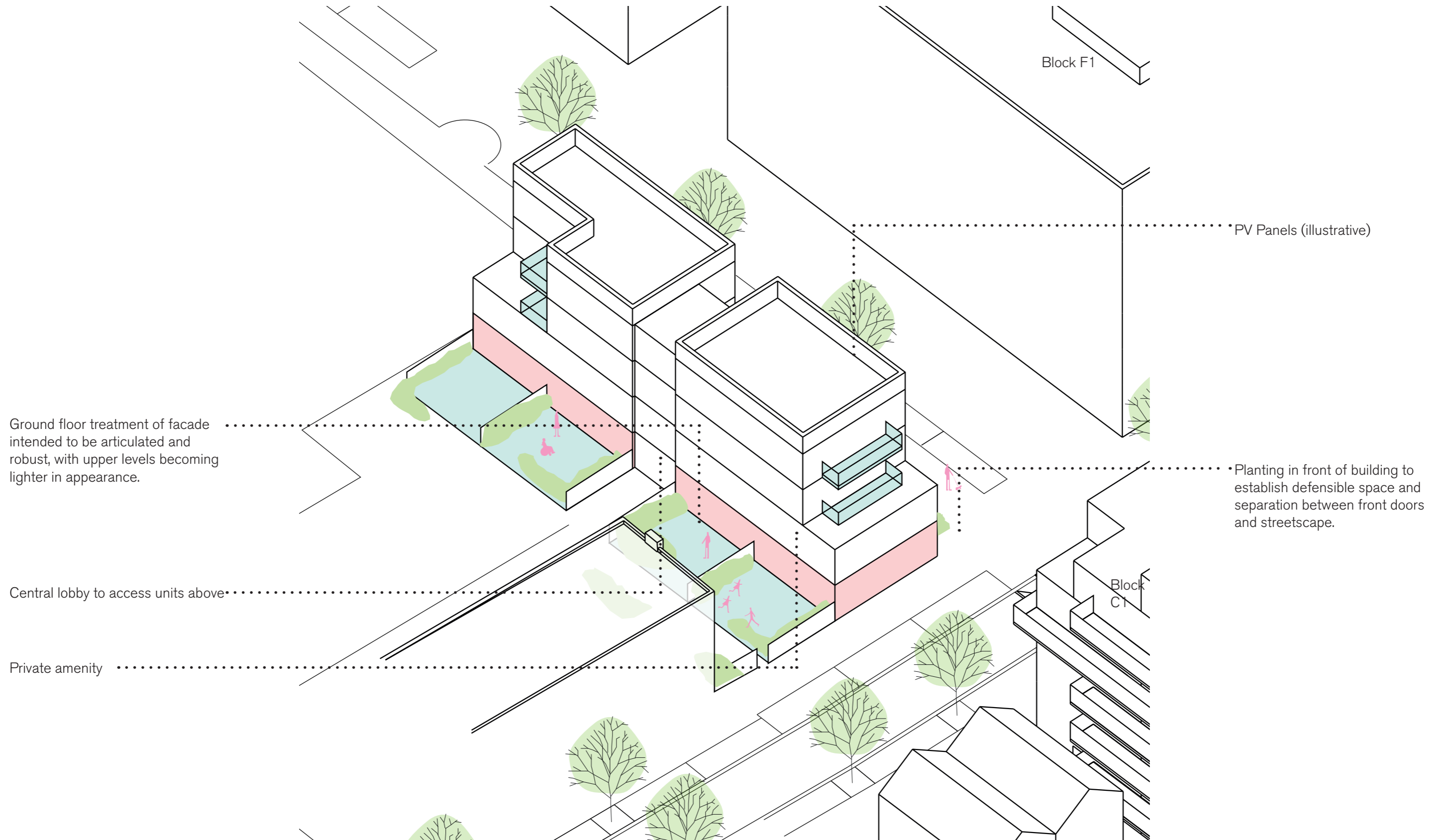


3B5p	4
4B6p	4
Total:	8



7.4 BLOCK F2

7.4.2 DESIGN RATIONALE



7.4 BLOCK F2

7.4.3 FLOOR PLANS

Block F2's ground floor contains four maisonettes and a central stair to access the units above. The maisonettes each have a private front garden which is bordered by a low brick wall, and a private rear garden.

There is a communal garden at the rear of Block F2 which contains a variety of planting and a shelter to store bikes.

Access & Entrances

The four ground floor maisonettes each have individual front doors on the street-facing facade. The four units on levels two and three are M4(1) units and are accessed via the central stair.

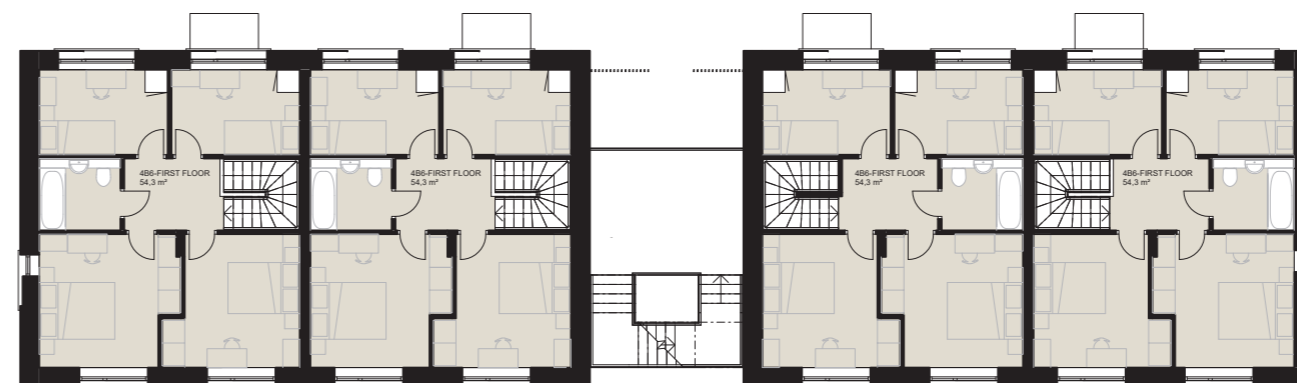
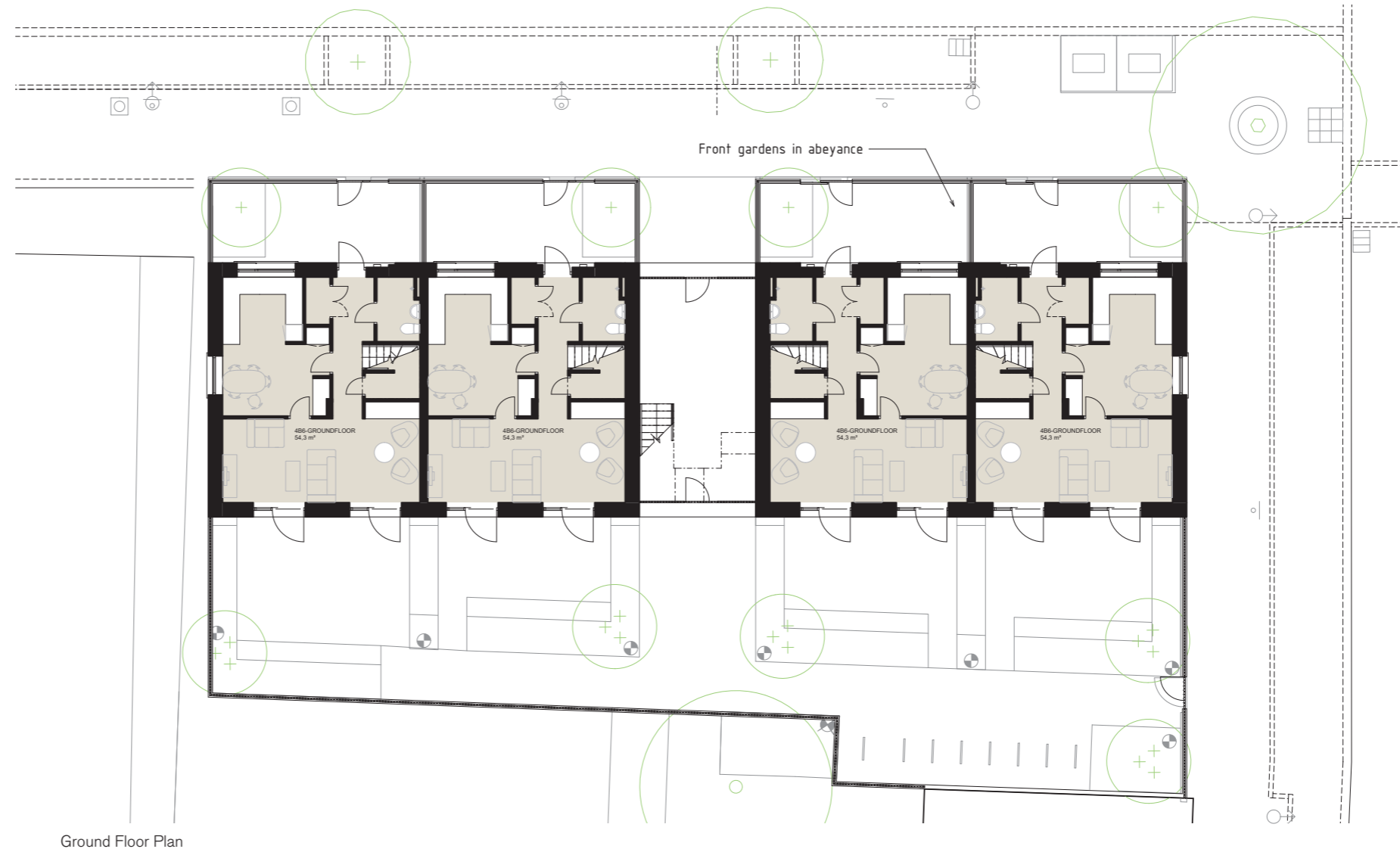
Servicing & Refuse

Postboxes will be provided at ground floor for the four units on levels two and three. The ground floor maisonettes will have individual post boxes at their front doors.

Implementation of URS (Underground Refuse System) across Phases 2B and 2C means all residential general waste and recycling is deposited in URS bins.

Bike Storage

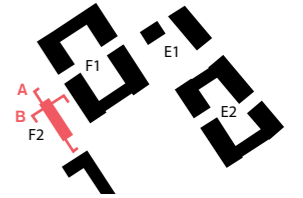
16 bicycle spaces (under shelter) are provided within the communal courtyard.



3B5P
4B6P

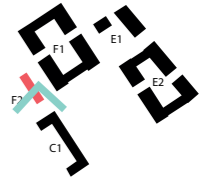
7.4 BLOCK F2

7.4.4 SECTIONS



7.4 BLOCK F2

7.4.5 INDICATIVE MATERIAL PALETTE



METALWORK - OLIVE

Colour: RAL TBC
Painted metal

METALWORK - BROWN

Colour: RAL TBC
Painted metal



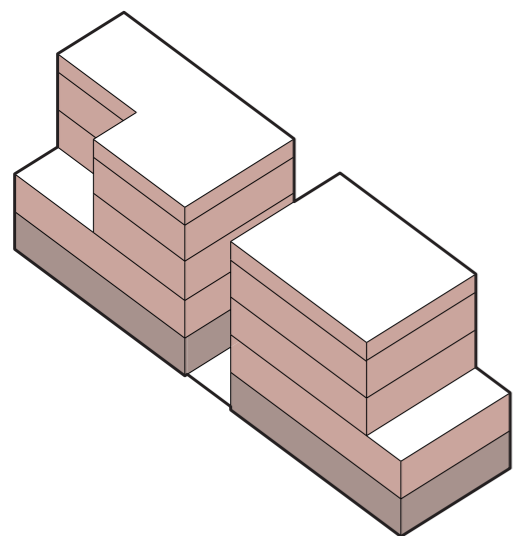
**WARM GREY BRICK
STRETCHER**

UK format 215x102.5x65mm



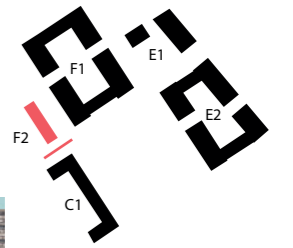
**WARM GREY BRICK
STRETCHER**

UK format 215x102.5x65mm



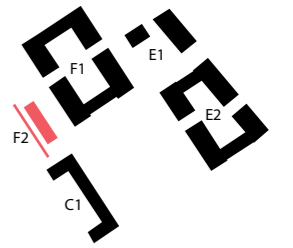
7.4 BLOCK F2

7.4.6 ELEVATION - SOUTH



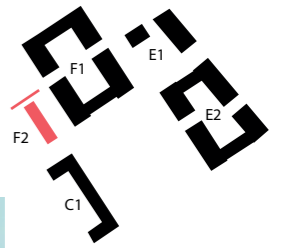
7.4 BLOCK F2

7.4.7 ELEVATION - WEST



7.4 BLOCK F2

7.4.8 ELEVATION - NORTH



7.4 BLOCK F2

7.4.9 ELEVATION - EAST

